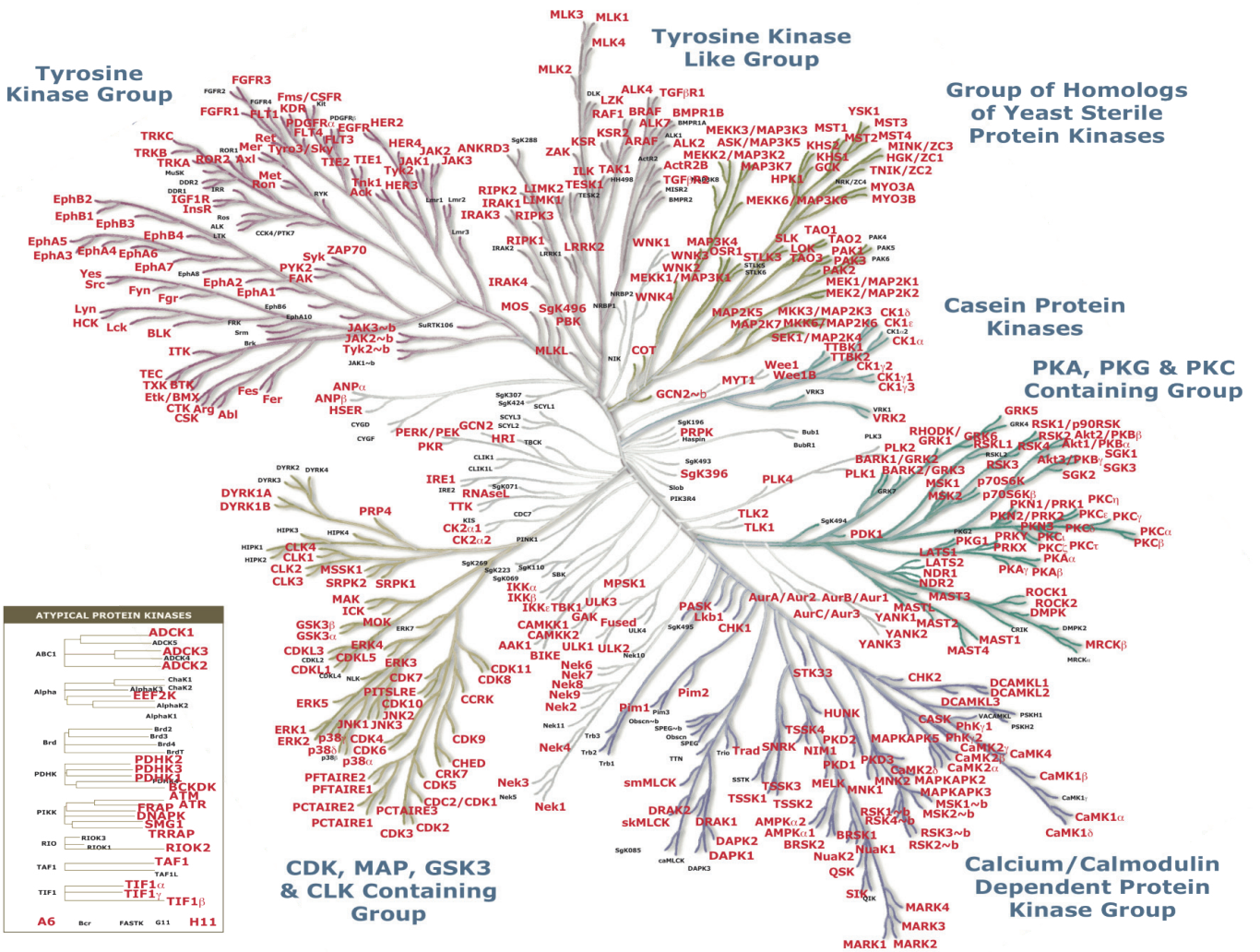


Global Kinase Coverage

Profiling native protein & lipid kinases with KiNativ™

The KiNativ™ platform provides an unprecedented ability to broadly profile native protein and lipid kinase activities in cell lysates for both overall activity/expression level and sensitivity to candidate inhibitors (without the need for recombinant protein expression or substrate-based assay development). To maximize profiling efficiency panels of kinases are assembled based on their distribution in a given cell line or tissue extract. With more than 200 kinases per tissue or cell line and combined coverage of more than 400 protein and lipid kinases, KiNativ™ offers comprehensive and quantitative profiling for all kinase research.



Red entries in the dendrograms represent kinases that were labeled on the ATP binding site as determined by ATP competition and/or structural modeling of conserved ATP site lysine residues.



www.cellsignal.com

The kinome diagram is used with permission from Cell Signaling Technologies, Inc

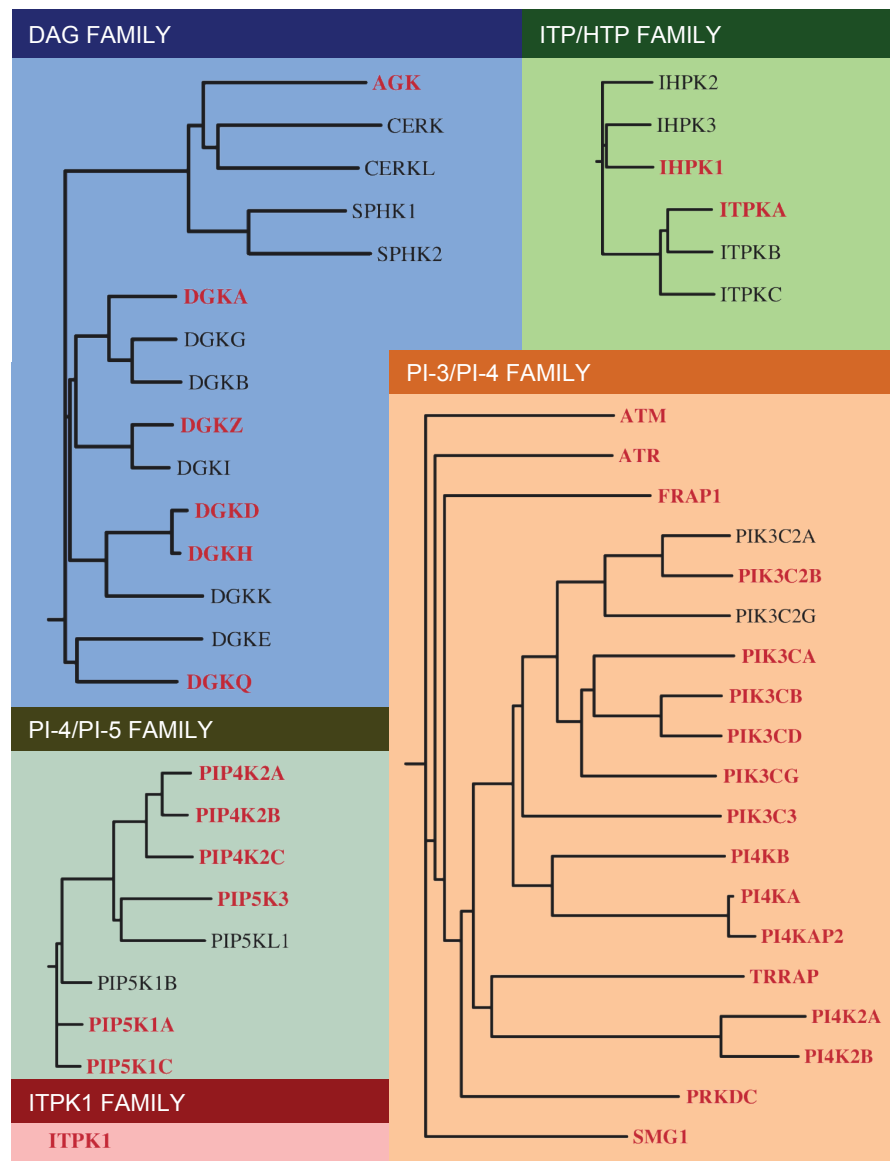


For more information about KiNativ™ call 858-526-2515 or visit www.kinativ.com

Global Kinase Coverage

Profiling native protein & lipid kinases with KiNativ™

A unique feature of the KiNativ™ platform is the ability to profile native lipid kinases and related enzymes. Lipid kinases have been notoriously difficult to assay given their large molecular weight (>100 kD), difficult recombinant expression, and the fact that they are known to exist as multi-protein complexes that modulate both their activity and selectivity. The KiNativ™ lipid kinase panel has been validated for profiling native PI3/4 kinases, PI3K related protein kinases, PIP4/5 kinases, diacylglycerol kinases, ITPK's and others.



Red entries in the dendrogram represent kinases that were labeled on the ATP binding site as determined by ATP competition and/or sequence analysis.



For more information about KiNativ™ call 858-526-2515 or visit www.kinativ.com